



DIN



INDUSTRIAL
FASTENERS
INSTITUTE

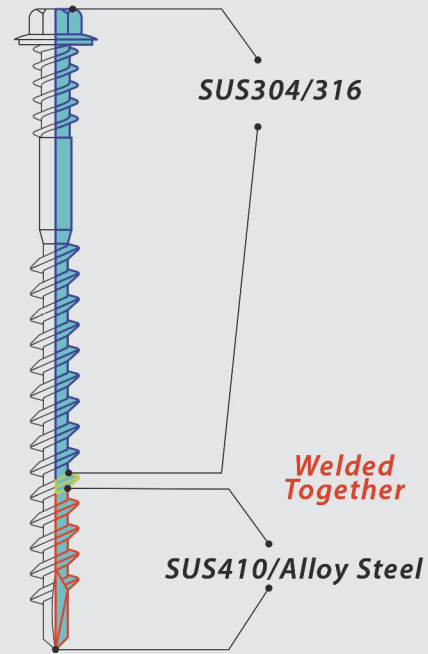
Australian Standard™



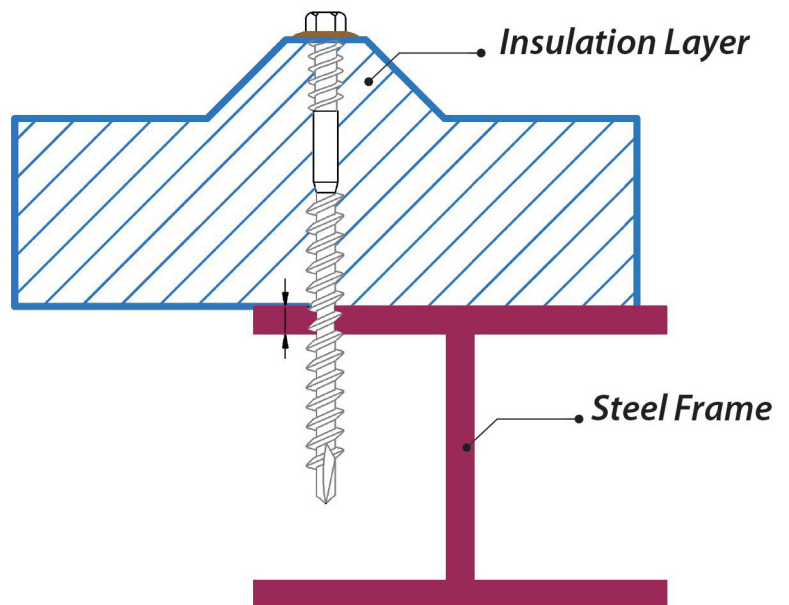
ECO FRIENDLY
PRODUCTION



Bi-Metal Screws



In house Eddy Current Machine is used to detect loose welding and cracks on every Bi-Metal Screws EC made.



Material	Tensile Strength N/mm ²	Hardness/HV	Application Material	Material Thickness	Finish	Red Rust In Neutral Salt Spray Test	Corrosion Details	Application Circumstances	Construction Lifetime
Bi-Metal 316+410 RXB Coated	500-700	Surface: HV210-320 Core: HV190-280	wood + thick construction plastic wood + stainless steel chipboard + carbon steel / stainless steel	carbon steel plate < 6mm or stainless steel plate < 4mm	RXB coating	2000 hrs	difficult to corrode, with protective film once oxidized	neutral indoor ✓ exposed outdoor ✓ corrosive outdoor ✓ coastal indoor ✓ coastal outdoor ✓	class 1, endurance > 100 years, critical / high-rise construction